

# Premises Liability Litigation 2016

Plaintiff and Defense  
Perspectives

This Program is now **JUNE 15th!**  
(rescheduled due to snow)

LIVE PROGRAM & LIVE WEBCAST:

~~MARCH 23, 2016~~

Live program will be at the Colorado CLE Classroom  
1900 Grant Street, Suite 300, Denver, CO

## PROGRAM HIGHLIGHTS:

- Background of Colorado's Premises Liability Law
- Recent Important Premises Liability Cases and Developments
- Tort Claims Related and/or Relevant to Premises Liability –  
Case Law Update
- Trends and Briefing Tips

**VIDEO REPLAYS: JULY 15, 2016**

In Denver, Colorado Springs, and Grand Junction

**CLE CREDITS:** Submitted for 5 General CLE Credits

**REGISTER FOR THIS PROGRAM ONLINE! Go to [www.cobarcl.org](http://www.cobarcl.org)**



# Premises Liability Litigation 2016

## Plaintiff and Defense Perspectives

*Co-sponsored by the CBA Litigation Section*

LIVE PROGRAM & LIVE WEBCAST:  
~~MARCH 23, 2016~~

Live program will be at the Colorado CLE Classroom  
1900 Grant Street, Suite 300, Denver, CO 80202

This Program is now **JUNE 15th!**  
(rescheduled due to snow)



**W**hether you are commencing your litigation practice, expanding your practice to include premises liability actions, or you are a seasoned practitioner wanting the most up-to-date and critical information in the premises liability arena, this program is for you. You will hear both plaintiff and defense perspectives. You will receive essential information regarding Colorado's premises liability law, get updated on critical recent developments and trends, and gain insights on plaintiff strategies and defense responses. Plus, your expert faculty will share with you trends and tips for winning briefs!

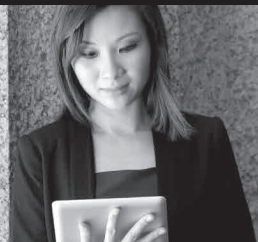
***Join us in March to learn and network with experts and colleagues!***

**VIDEO REPLAYS: JULY 15, 2016** • Denver, Colorado Springs, and Grand Junction

**CLE CREDITS: Submitted for 5 General CLE Credits**

## The CLE Pass:

### The Smart Thing To Do



With this incredible resource, you get unlimited access to the best catalog of CLE seminars in Colorado, all at a fraction of what you would normally pay!

***For more information or to sign up go to [www.cobaracle.org](http://www.cobaracle.org)***

## AGENDA

8:00 am Registration and Continental Breakfast

8:30 am Introduction and Welcome  
*Extended by Jane Lucero, Esq.*

8:35 am Background of Colorado's Premises Liability Law

- Plaintiff Perspective  
*Presented by Ethan McQuinn, Esq.*
- Defense Perspective  
*Presented by Jane Lucero, Esq.*

9:35 am Recent Important Premises Liability Cases and Developments

- *Jordan v. Panorama Orthopedics & Spine Center, PC*
- *Traynom v. Cinemark USA, Inc.*
- *Larrieu v. Best Buy Stores, L.P.*
- *Collard v. Vista Paving Corp.*
- *St. Vrain School District RE-1J v. A.R.L. by and through Loveland*

- Plaintiff Perspective  
*Presented by Marc Harden, Esq.*
- Defense Perspective  
*Presented by Jane Lucero, Esq.*

10:35 am Networking Break

10:45 am Tort Claims Related and/or Relevant to Premises Liability – Recent Case Law

- *Groh v. Westin Operator, LLC*
- *Build It and They Will Drink, Inc. v. Strauch*
- *SW ex rel. Wacker v. Towers Boat Club, Inc.*

- Plaintiff Perspective  
*Presented by Ethan McQuinn, Esq.*
- Defense Perspective  
*Presented by Jane Lucero, Esq.*

11:35 am Trends and Briefing Tips

- Plaintiff Perspective  
*Presented by Angela McGraw, Esq.*
- Defense Perspective  
*Presented by Jane Lucero, Esq.*

12:30 pm Adjourn

**REGISTER FOR THIS PROGRAM ONLINE! Go to [www.cobaracle.org](http://www.cobaracle.org)**

## FACULTY

### CHAIR AND PROGRAM PLANNER

Jane Lucero, Esq.\*

Harris, Karstaedt, Jamison & Powers, P.C.  
Englewood, CO

### FACULTY

Marc Harden, Esq.

Zaner Harden Law LLP  
Denver, CO

Angela McGraw, Esq.

Fleishman & Shapiro P.C.  
Denver, CO

Ethan McQuinn, Esq.

Anderson, Hemmat & McQuinn L.L.C.  
Greenwood Village, CO

\* Also Faculty

# INTRODUCING ... New Lawyer Edge



## FOR ATTORNEYS IN YOUR FIRST FIVE YEARS OF PRACTICE

New Lawyer  
Edge

For one low price, New Lawyer Edge Membership includes:

### LIVE AND LIVE WEBCAST CLE PROGRAMS

- Unlimited Free Attendance at Live *Build Your Practice* CLE Seminars (This includes Basics and Fundamentals courses)
- 50% discount off all other Live and Live Webcast Colorado CLE Seminars

### COLORADO CLE HOMESTUDIES

- 24/7 Free online access to CLE Content for all Basics and Fundamentals Seminars
- 50% discount off all other online Colorado CLE Homestudies

### COLORADO CLE BOOKS

- 20% discount on Colorado CLE Books

### ADDITIONAL RESOURCES

- Online CLE Course Materials: PDF library with thousands of CLE course materials
- CLE Forms Bank: This exclusive resource provides forms culled from our substantive legal publications

### NETWORKING OPPORTUNITIES

- Faculty / Author Reception: Meet attorneys who've increased their visibility in the legal community through CLE!

### PRICING:

- \$199 for CBA Members
- \$299 for Non-Members

## WEBCAST INFORMATION

### WEBCASTING IS GREEN!

Course materials are provided in PDF format to all webcast attendees. If you prefer to receive the materials in paper form, you must make this request at the time of registration; the materials will be shipped when available and we cannot guarantee that you will receive them prior to the program.

### WEBCASTING IS EASY!

#### THE MINIMUM SYSTEM REQUIREMENTS:

- Your computer should have a 500 MHz or higher processor and at least 128 mb of RAM
- A connection to the Internet of at least 700 kbps is highly recommended, and most people now have connections at that speed or faster. Check your speed now (or go to <http://www.speedtest.net/>)
- Course materials are delivered in PDF format. You will need a recent version of Adobe Reader. Free download here: <http://get.adobe.com/reader/>

- Adobe Flash Player v. 11.X or higher (Free download here: <http://get.adobe.com/flashplayer/>)
- Tablets and iOS devices will need a web browser and high speed wi-fi connection. Our video is encoded HTML5 compliant x264 format which will play on any contemporary device with sufficient bandwidth.
- You will also need a sound card and speakers, and a current web browser

#### TIPS FOR A BETTER WEBCAST EXPERIENCE:

<http://cle.cobar.org/About/FAQs/Technical-FAQs#webcastvod>

You will receive a confirmation and instructions to view the webcast via email upon registration.

# PREMISES LIABILITY LITIGATION 2016



**Register by PHONE**  
when using VISA, MC or AmEx  
In Denver: (303) 860-0608  
Toll-Free: (888) 860-2531



**Or FAX form to**  
when using VISA, MC or AmEx  
FAX to: (303) 860-0624



**Or MAIL form to**  
**CLE in Colorado**  
1900 Grant St, Suite 300  
Denver, CO 80203-4303



**Or Register ONLINE**  
when using VISA, MC or AmEx  
Go to [www.cobaracle.org](http://www.cobaracle.org)

## PROGRAM ORDER FORM

### STEP 1 - REGISTRATION TYPE: *(Select live program, live webcast, or video replay)*

- LIVE PROGRAM: JUNE 15, 2016** - In Denver at the Colorado CLE Classroom, 1900 Grant St., Suite 300 (LI032316L)
- LIVE WEBCAST: JUNE 15, 2016** - Must have access to high-speed internet (LI032316W)
- VIDEO REPLAY: JULY 15, 2016** - Please indicate video replay location:
  - Denver:** Colorado CLE Classroom, 1900 Grant Street, Suite 300 (LI032316V)
  - Colorado Springs:** 421 S. Tejon Street, Suite 100 (LI032316VCS)
  - Grand Junction:** 1250 E. Sherwood Drive (LI032316VGJ)

### STEP 2 - MATERIALS FORMAT:

- Digital Download via EMAIL (sent 24-48 hrs. prior to the seminar)       Printed Book (pick up at conference)

### STEP 3 - REGISTRATION CATEGORIES:

- Non-member: .....\$329
- CBA Member: .....\$299
- CBA Litigation Section Member: .....\$249
- Paralegal/ Legal Support Staff: .....\$209
- New Lawyer Edge Member:** .....**FREE**
- CLE Elite Pass Holder:** .....**FREE**

**PROGRAM ORDER FORM TOTAL \$ \_\_\_\_\_**

## HOMESTUDY ORDER FORM

*To receive CLE Credit you must purchase both the course materials AND the recorded seminar.*

### STEP 1 - SELECT DESIRED PRODUCT FORMAT:

- Video-On-Demand** (LI032316N)       **MP3 Audio Download** (LI032316J)
- Paper course materials and recorded homestudy on CD-Rom** (LI032316D)

### STEP 2 - SELECT PAYMENT CATEGORY:

- Non-member: .....\$329       CBA Member: .....\$299
- Elite CLE Pass Holder** (MP3 and VOD ONLY) ....**FREE**       **Basic CLE Pass Holder** (MP3 and VOD ONLY) ....**FREE**
- New Lawyer Edge Member** (MP3 and VOD ONLY): **FREE**

### STEP 3 - COURSE MATERIALS ONLY: *(Paper Only - LI032316C) Skip this step if you purchased the HOMESTUDY.*

- Non-member: \$125       CBA Member: \$95

*NOTE: Shipping & handling only applies to orders you receive via mail. Materials will be mailed to you approximately 2 weeks after live program.*

Price \$ \_\_\_\_\_  
Shipping & Handling \$ 10.95  
Subtotal \$ \_\_\_\_\_

Applicable Sales Tax (7.62% Denver, 4% RTD and 2.9% rest of Colo.) \$ \_\_\_\_\_

**HOMESTUDY TOTAL \$ \_\_\_\_\_**

Name \_\_\_\_\_ Atty. Reg. # \_\_\_\_\_

Firm/Organization \_\_\_\_\_

E-Mail Address \_\_\_\_\_

Street Address \_\_\_\_\_

City \_\_\_\_\_ State \_\_\_\_\_ Zip \_\_\_\_\_

Telephone (     ) \_\_\_\_\_ Fax (     ) \_\_\_\_\_

- Enclosed is my check made payable to **CLE**     VISA     MasterCard     AmEx

Credit Card # \_\_\_\_\_ Exp. Date \_\_\_\_\_

Signature *(Required for credit card orders)* \_\_\_\_\_

**CLE Use Only:** Check #: \_\_\_\_\_ Approval #: \_\_\_\_\_

# Premises Liability Litigation 2016

Plaintiff and Defense Perspectives

*Co-sponsored by the CBA Litigation Section*

**LIVE PROGRAM & LIVE WEBCAST:**

~~**MARCH 23, 2016**~~

Live program will be at the Colorado CLE Center  
1900 Grant Street, Suite 300

**This Program is now JUNE 15th!**  
(rescheduled due to snow)

**VIDEO REPLAYS:** JULY 15, 2016 • Denver, Colorado Springs, and Grand Junction

**CLE CREDITS:** Submitted for 5 General CLE Credits

**REGISTER FOR THIS PROGRAM ONLINE! Go to [www.cobaracle.org](http://www.cobaracle.org)**



1900 Grant Street, Suite 300, Denver, Colorado 80203-4303

Nonprofit Org.  
U.S. Postage Paid  
Permit No. 1638  
Denver, CO